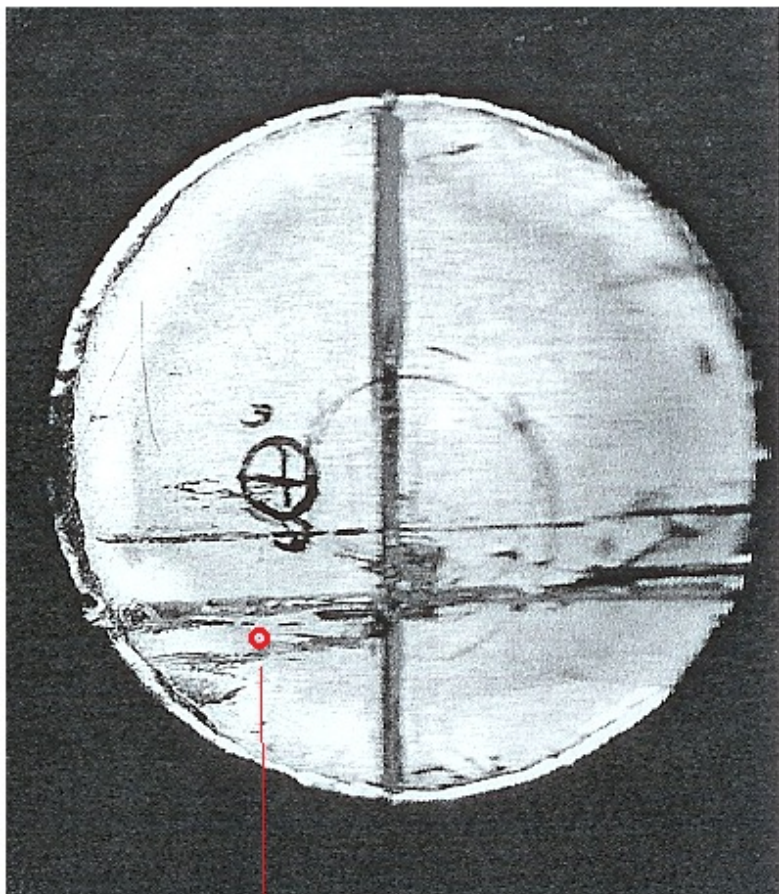


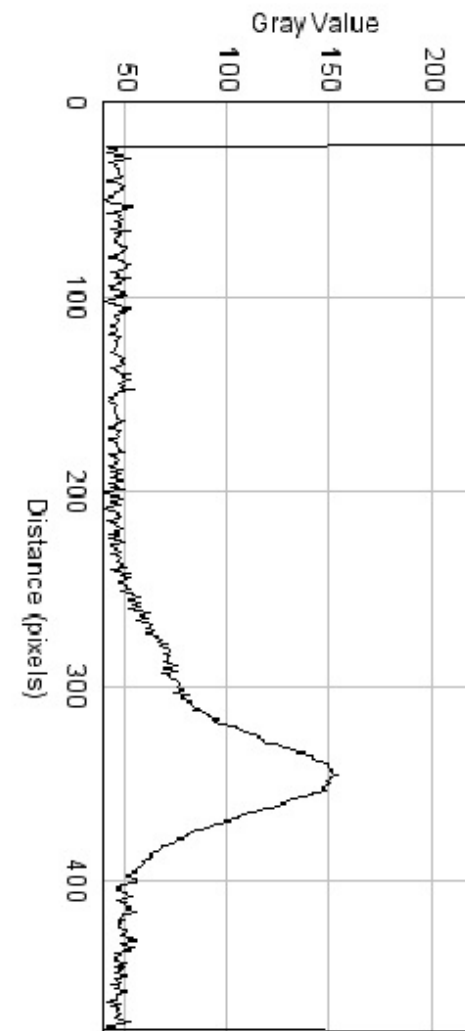
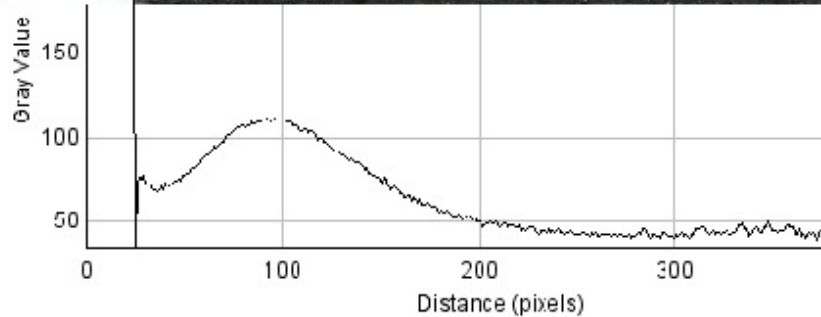
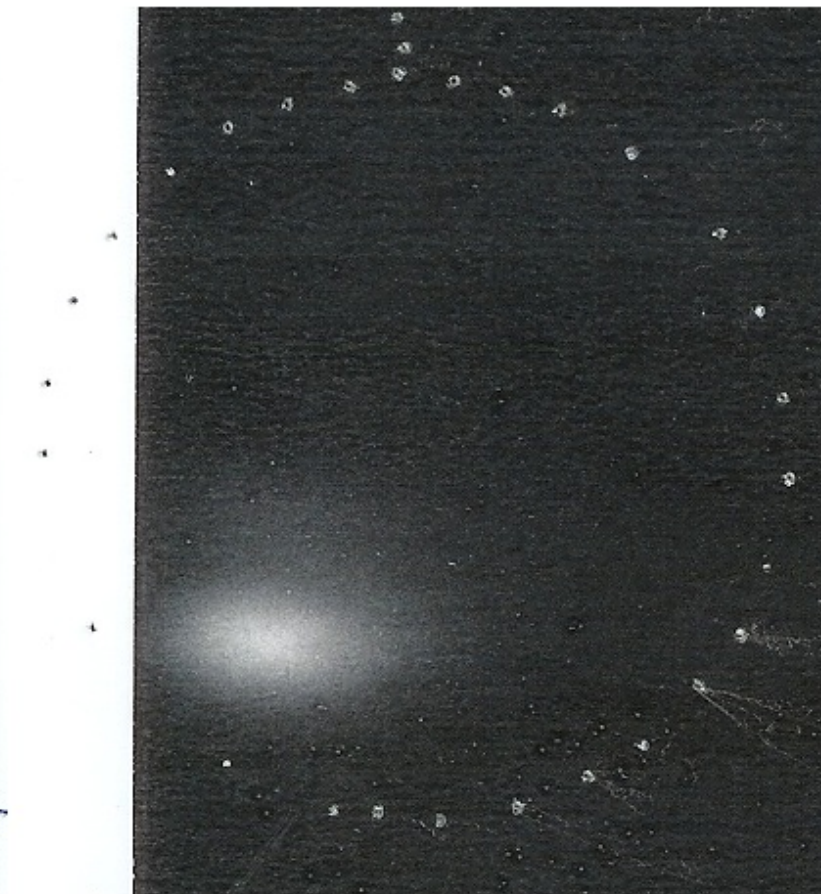
MERIT Autoradiographs

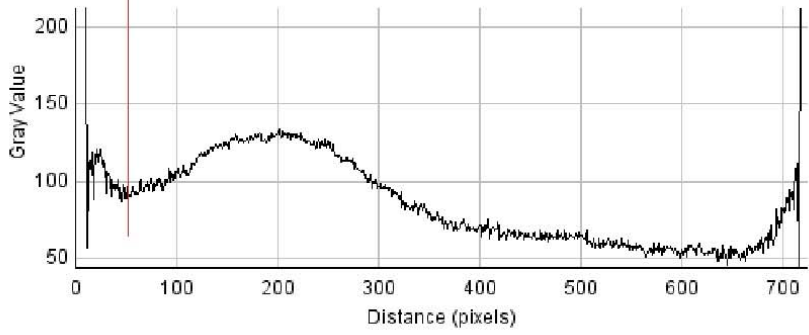
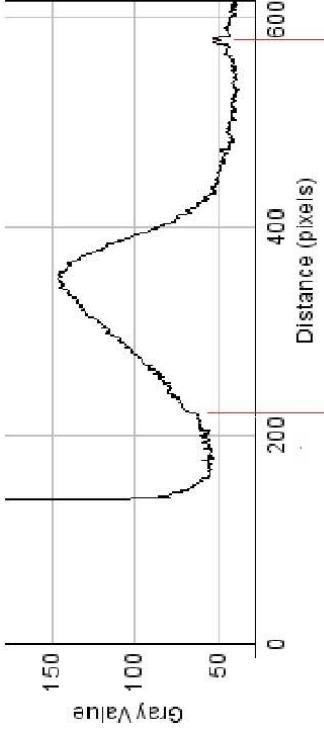
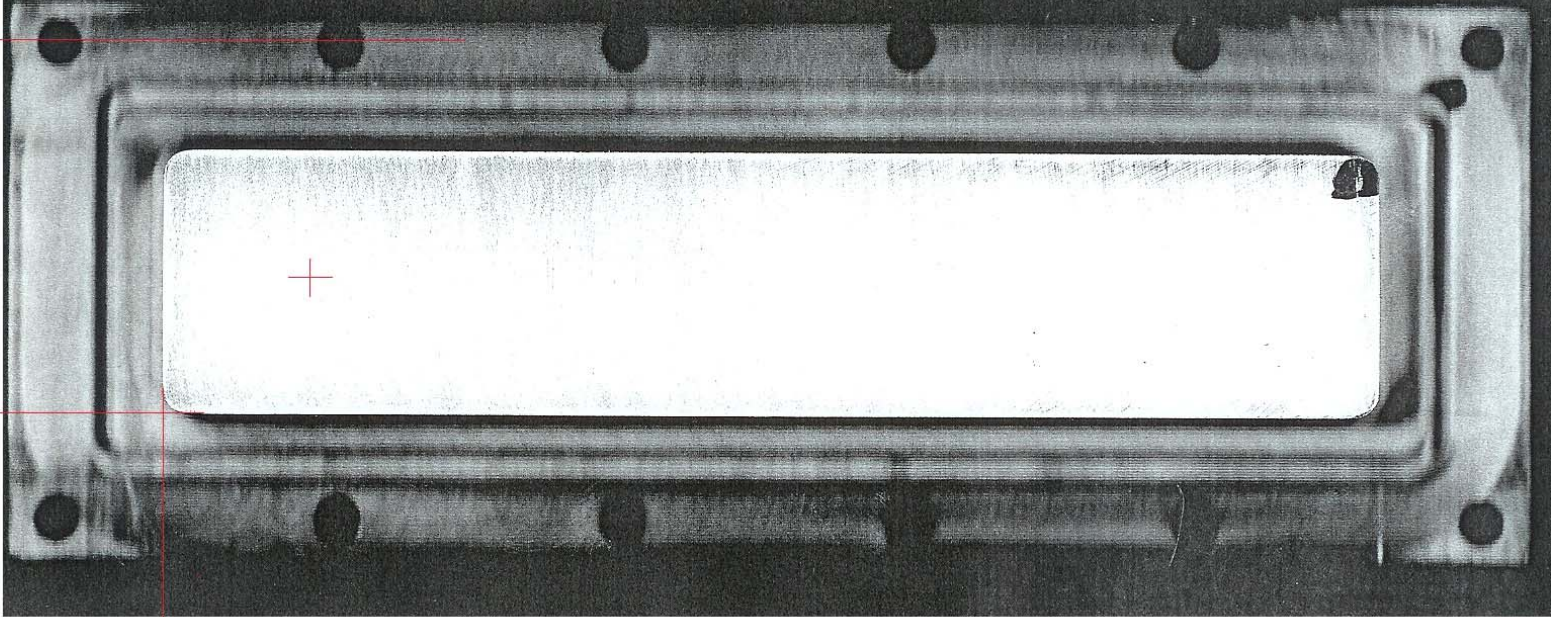
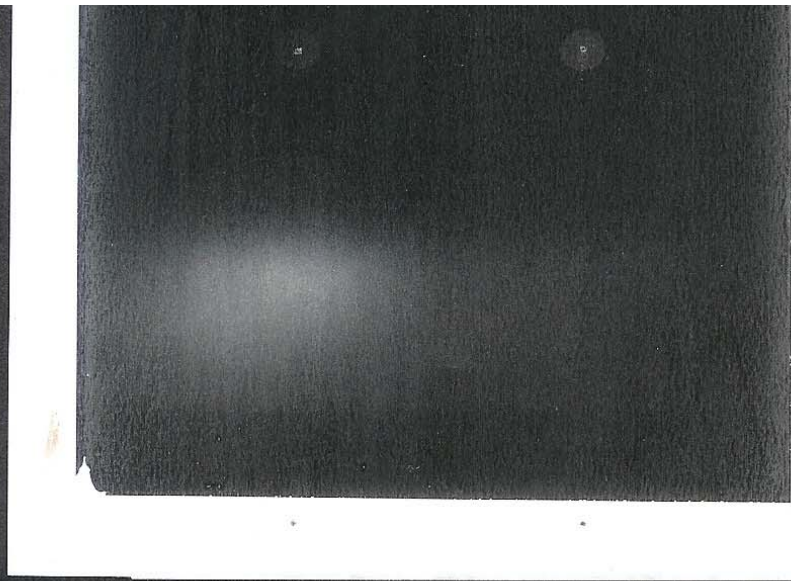
P. Thieberger, BNL
(Dec. 21, 2011)



Peak
position

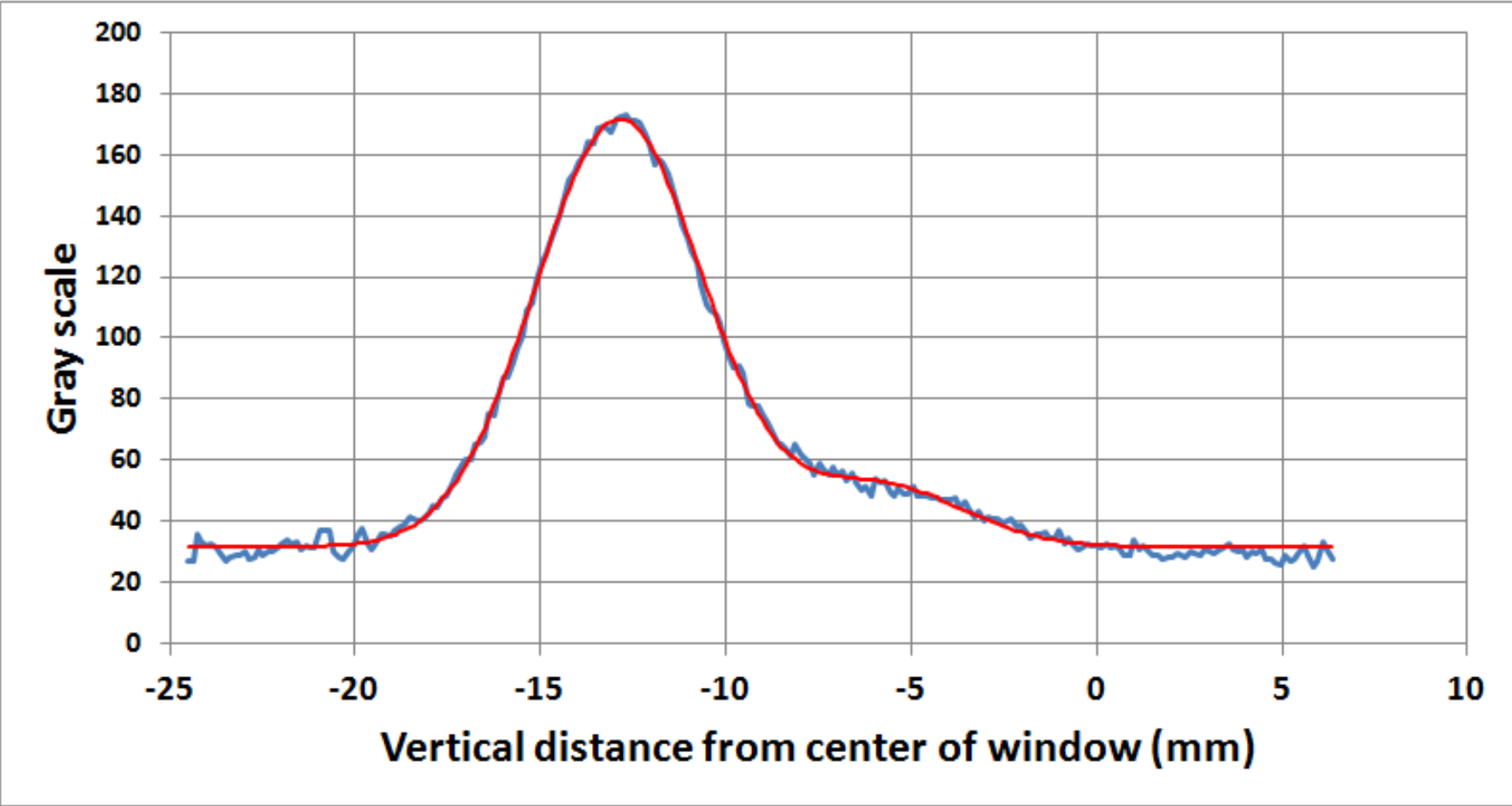
1 cm





1 cm

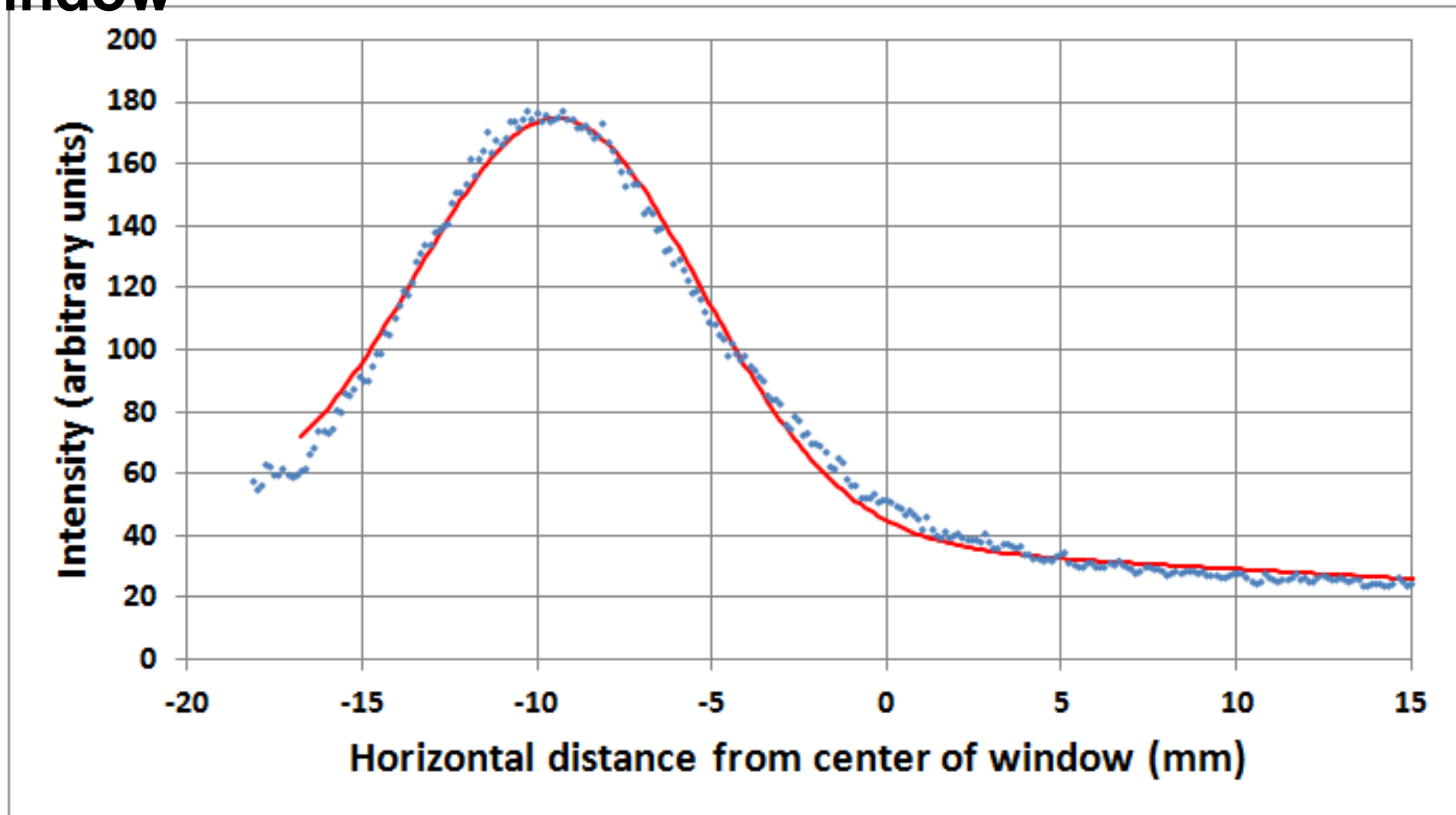
Fit of the vertical beam profile on the round window with two Gaussians of equal widths.



The calibration is 200 pixels per inch.

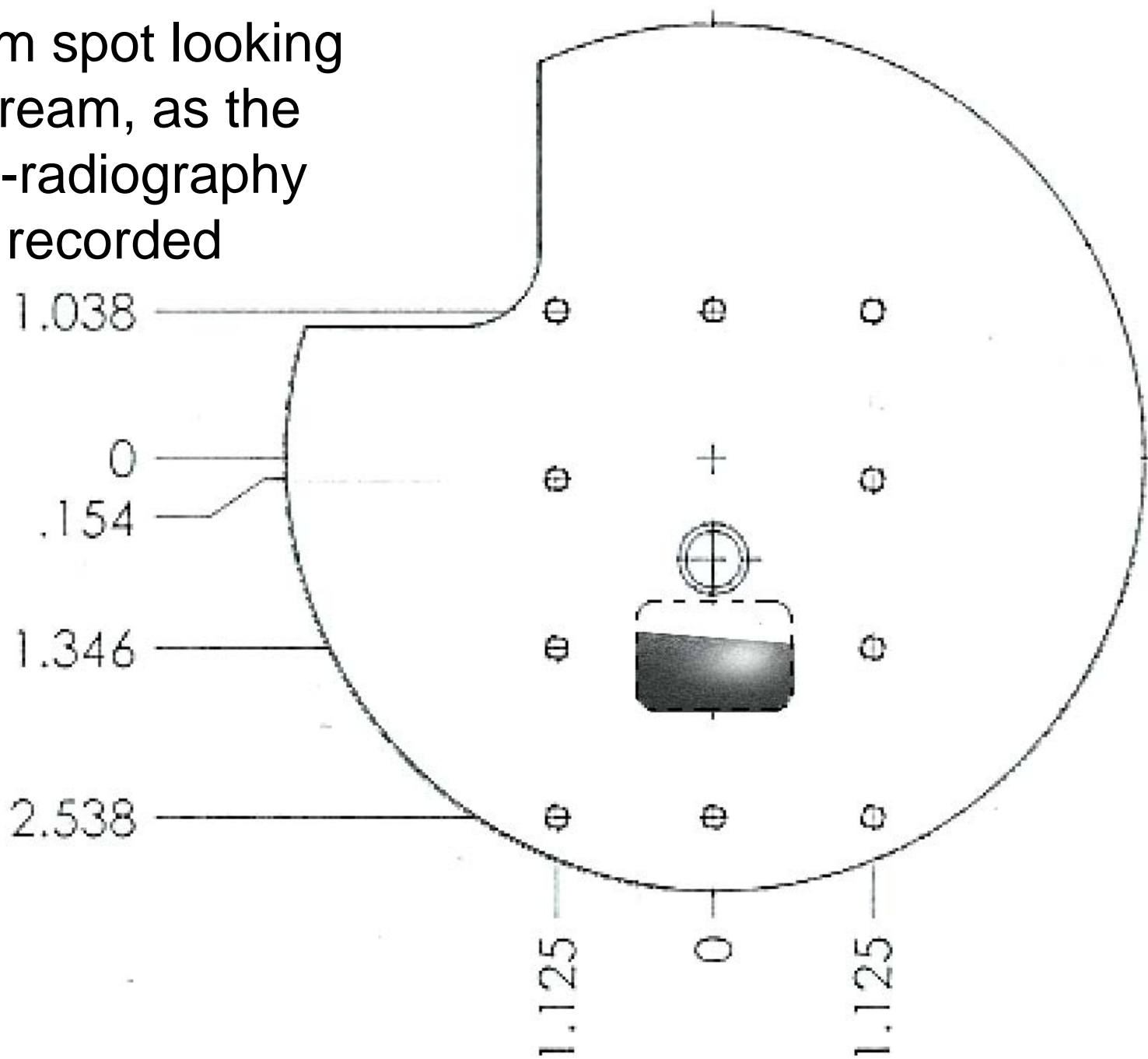
	Gaussian 1	Gaussian 2
Peak position (mm)	-12.9	-5.9
Sigma (mm)	2.3	2.3
Amplitude	139.9	20.4
Base	31.6	31.6

Gaussian fit to the horizontal beam profile on the round window

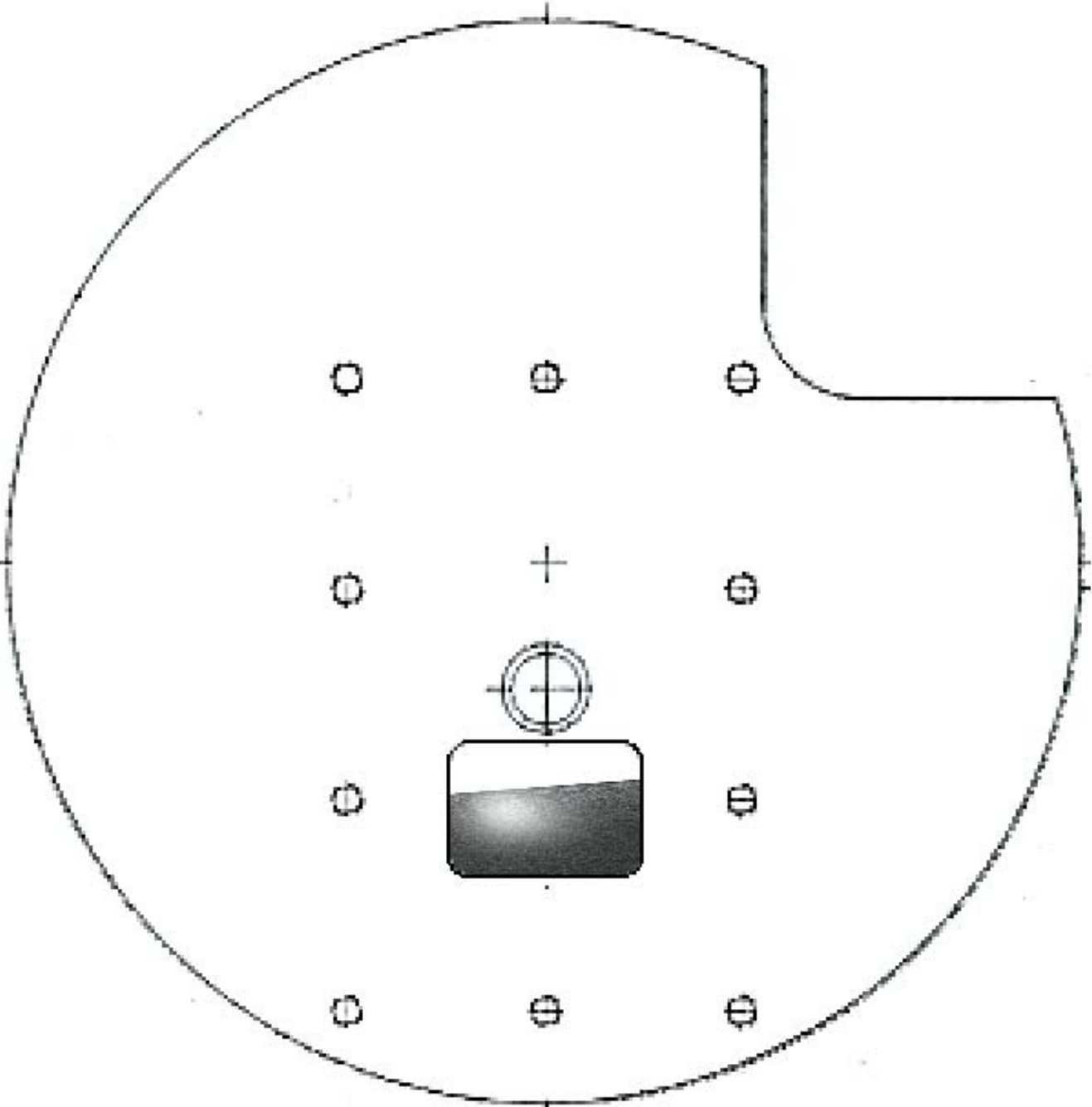
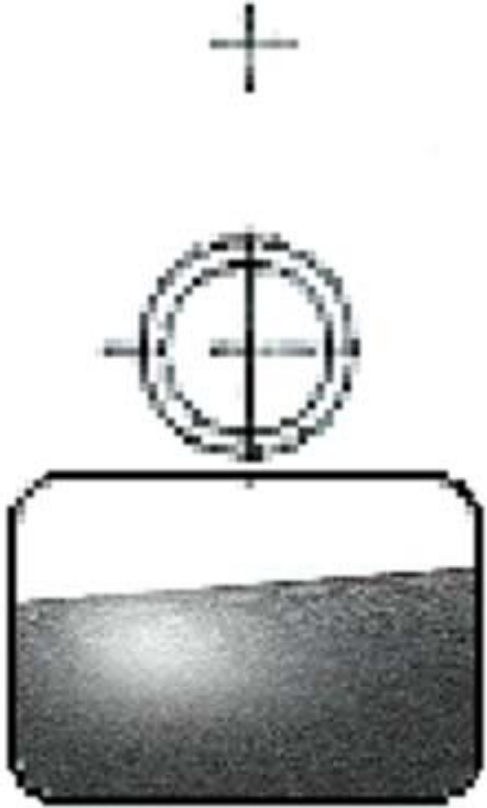


Peak position	-9.4	mm
Amplitude	133.3	intensity units
Sigma	4.1	mm
Base	35.5	intensity units
Slope	-0.63	intensity units/mm

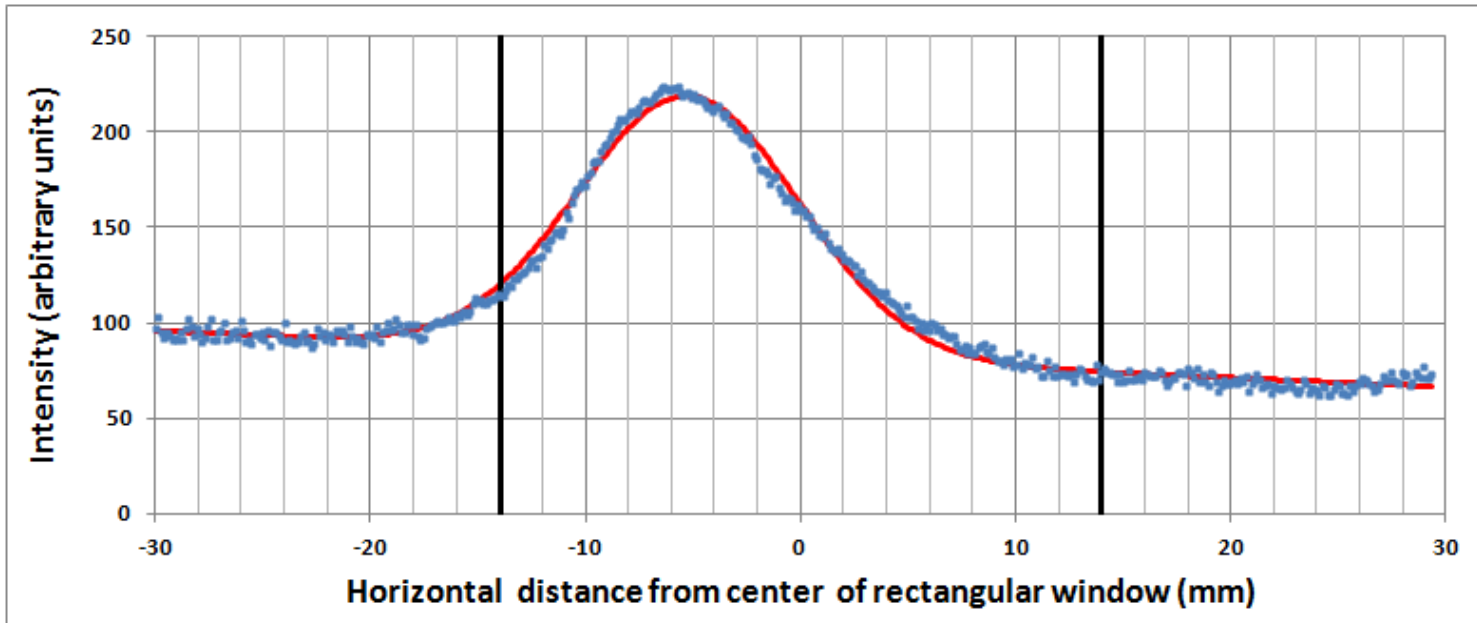
Beam spot looking upstream, as the auto-radiography was recorded



Beam spot looking downstream. The white border of the Polaroid film prevented the recording of the upper tail of the profile

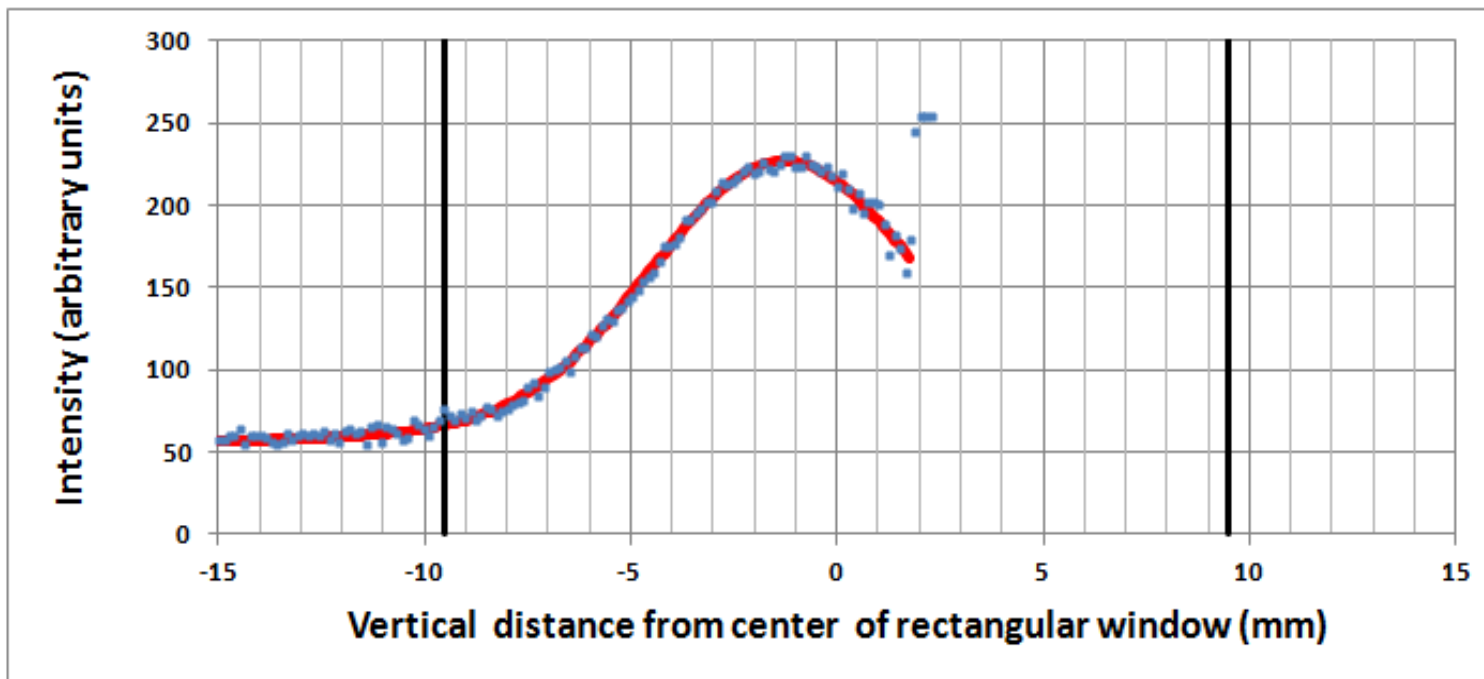


Fitted beam profiles



Horizontal

RMS Width	5.16	mm
Center	-5.22	mm
Height	135.2	GS units
Base	81.1	GS units
Slope	-0.048	Gs units/mm



Vertical

RMS Width	3.16	mm
Center	-1.34	mm
Height	160.3	GS units
Base	40.9	GS units
Slope	0.019	Gs units/mm