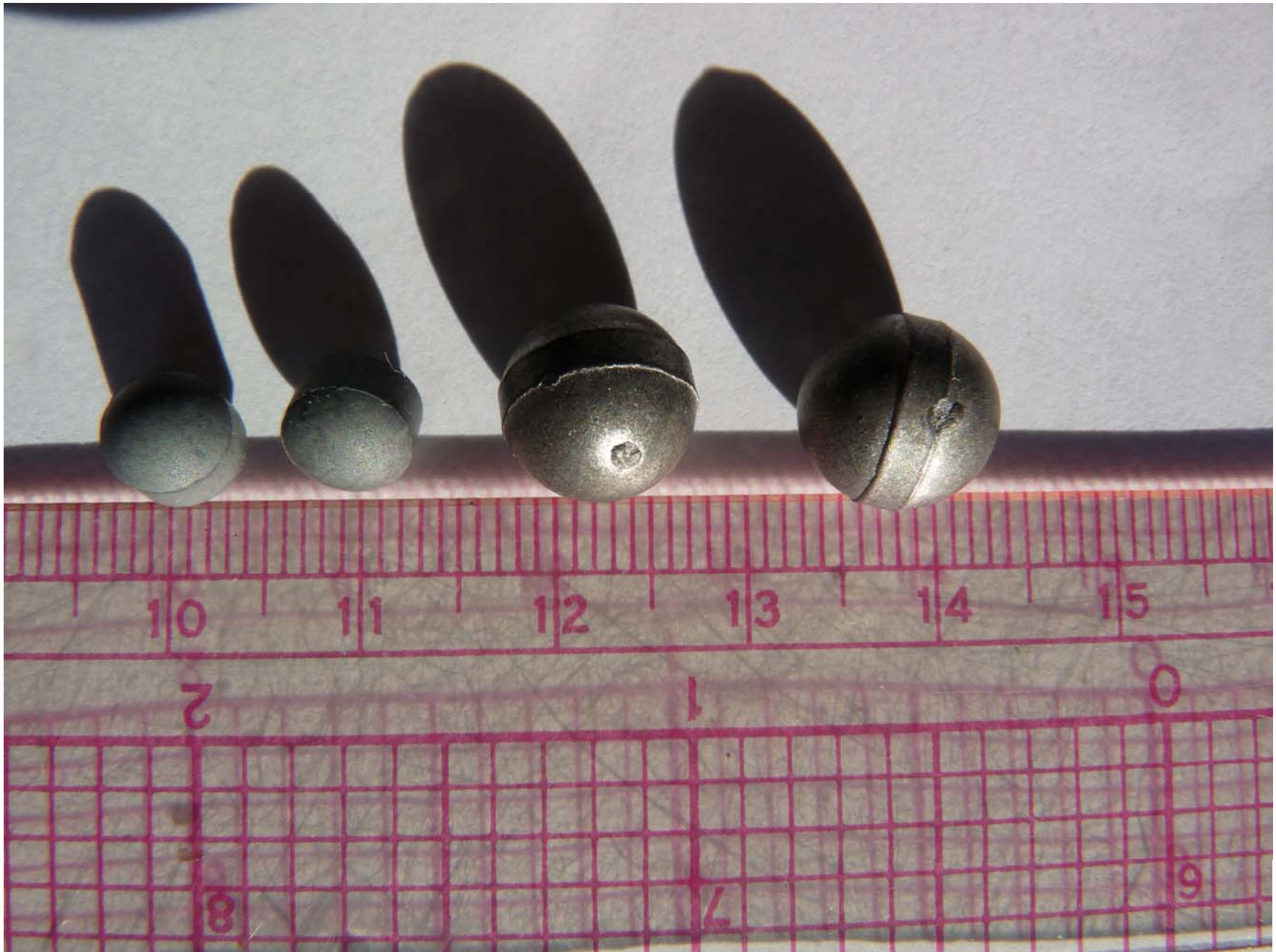
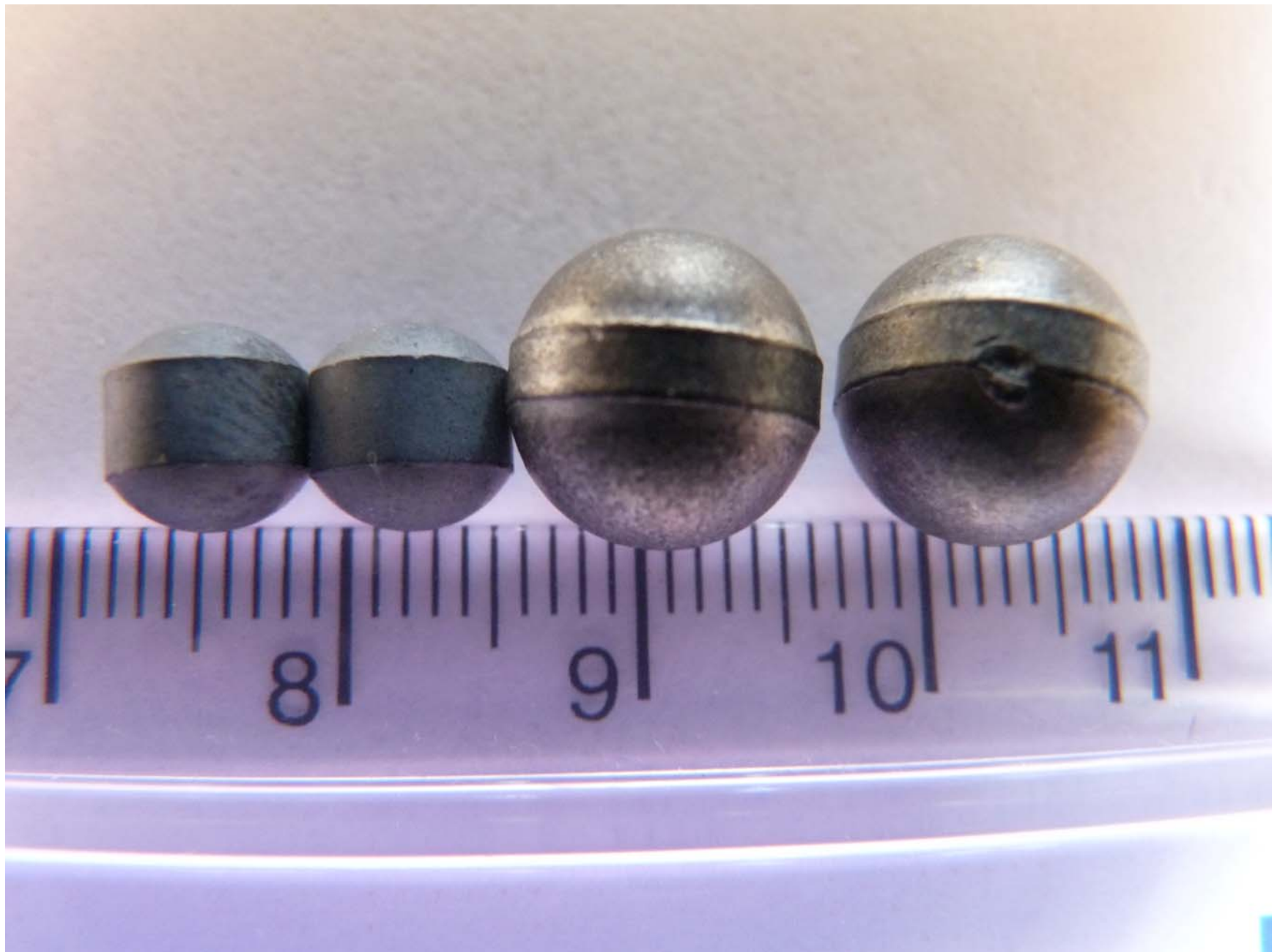
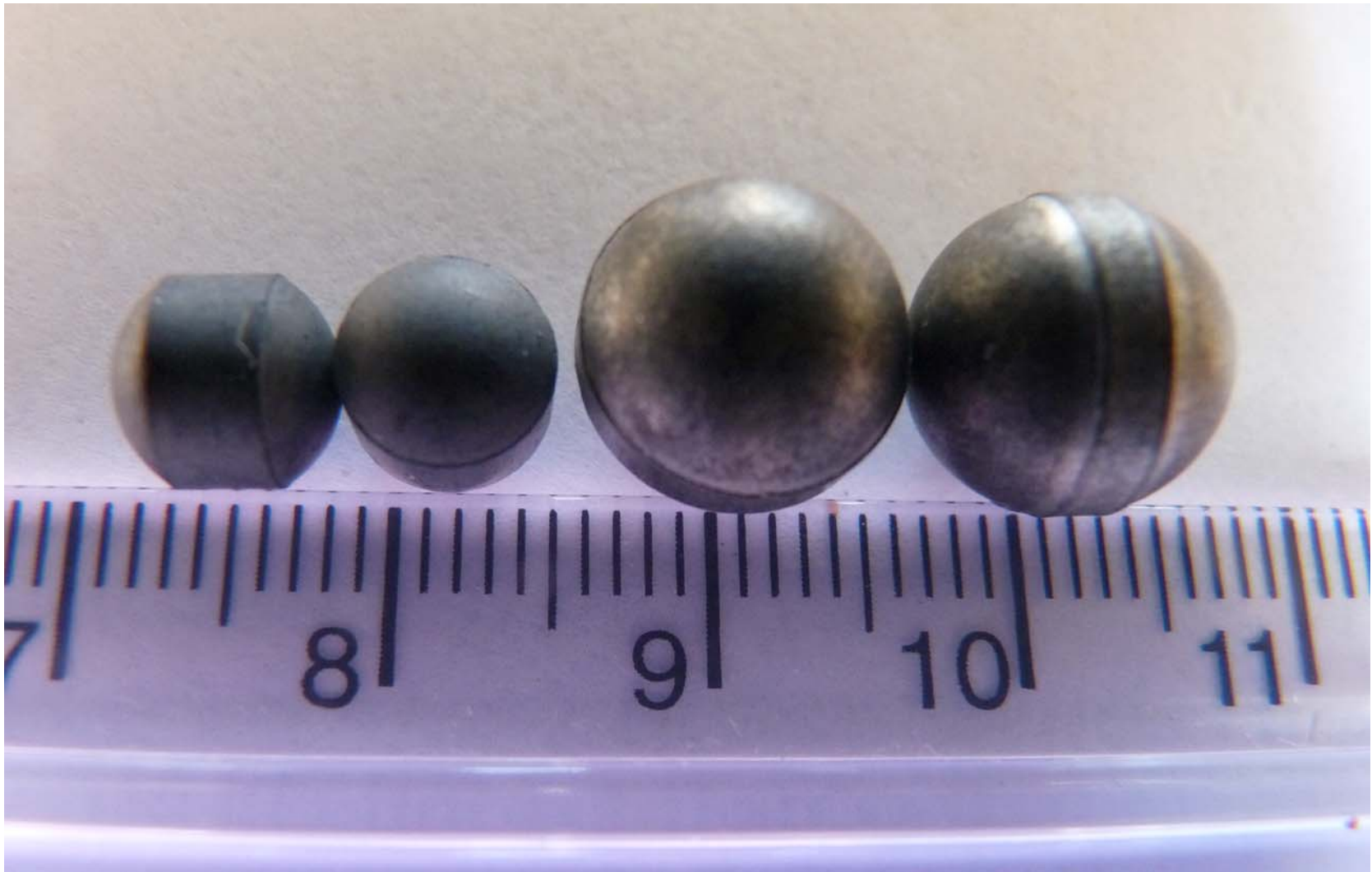


Large spheres are 97% tungsten; density =  $18.2 \text{ g/cm}^3$ . Small spheres are WC/Co; density =  $14.54 \text{ g/cm}^3$ .









Large spheres are 97% tungsten; density =  $18.2 \text{ g/cm}^3$ . Small spheres are WC/Co; density =  $14.54 \text{ g/cm}^3$ .