

# View of center Triport tack welds



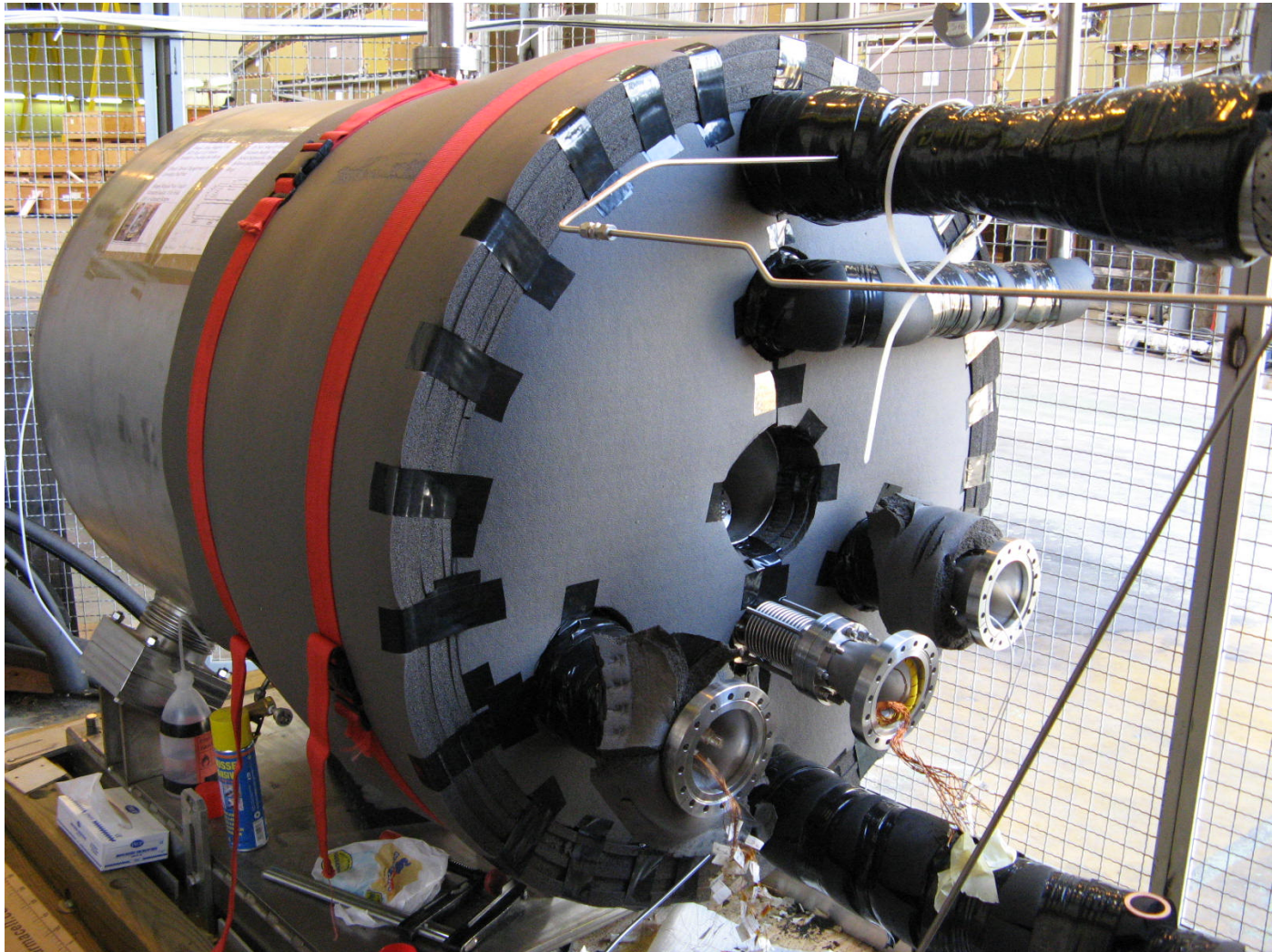
# Post May 23 VRVS History

- Wednesday--Outer Triport had been set at 14Nt-m-- Failed
- Thursday failed Triport removed for rewelding
- Remaining Triports set at 10Nt-m
- Friday Morning--Middle Triport Failed
- All remaining Triports removed for rewelding

# Post May 23 VRVS History II

- Friday--Outer Triport returned and retested
- Friday—Remaining Triports returned
- Retesting unsuccessful
- Tuesday--All Triports rewelded for 2<sup>nd</sup> try
- Tuesday—Retesting successful
- Tuesday-Wednesday Repacking resumed

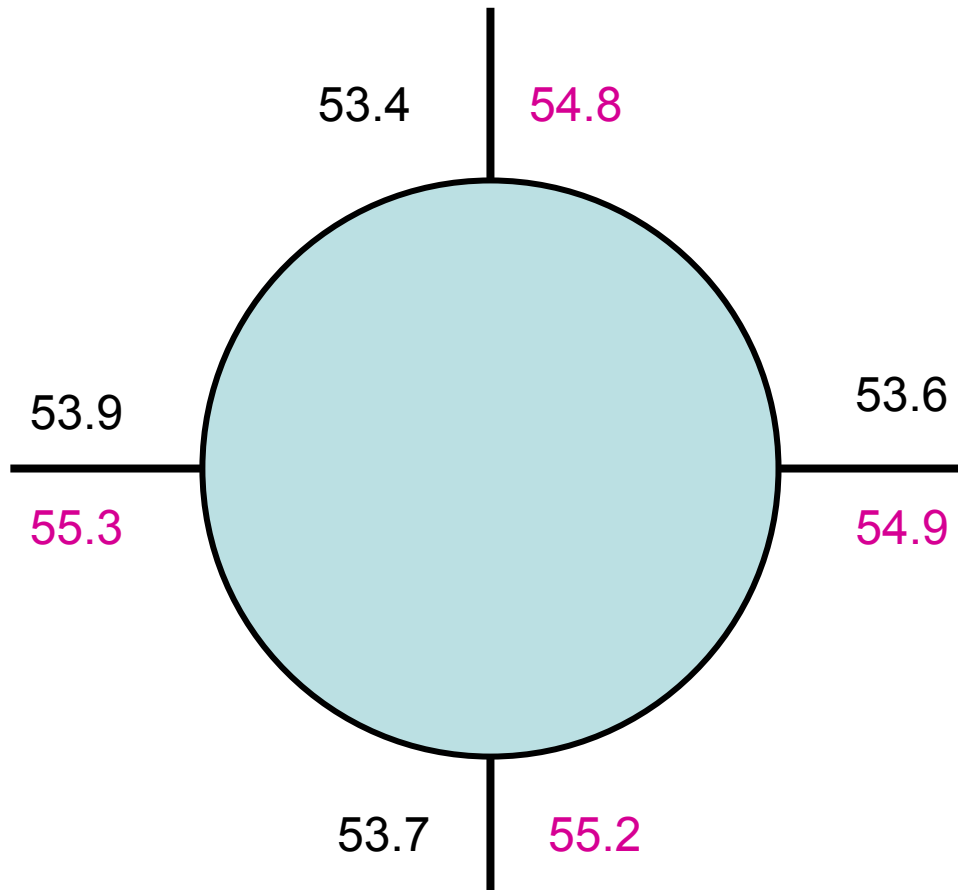
# Magnet Status Friday



# View of the Double Pack Scheme



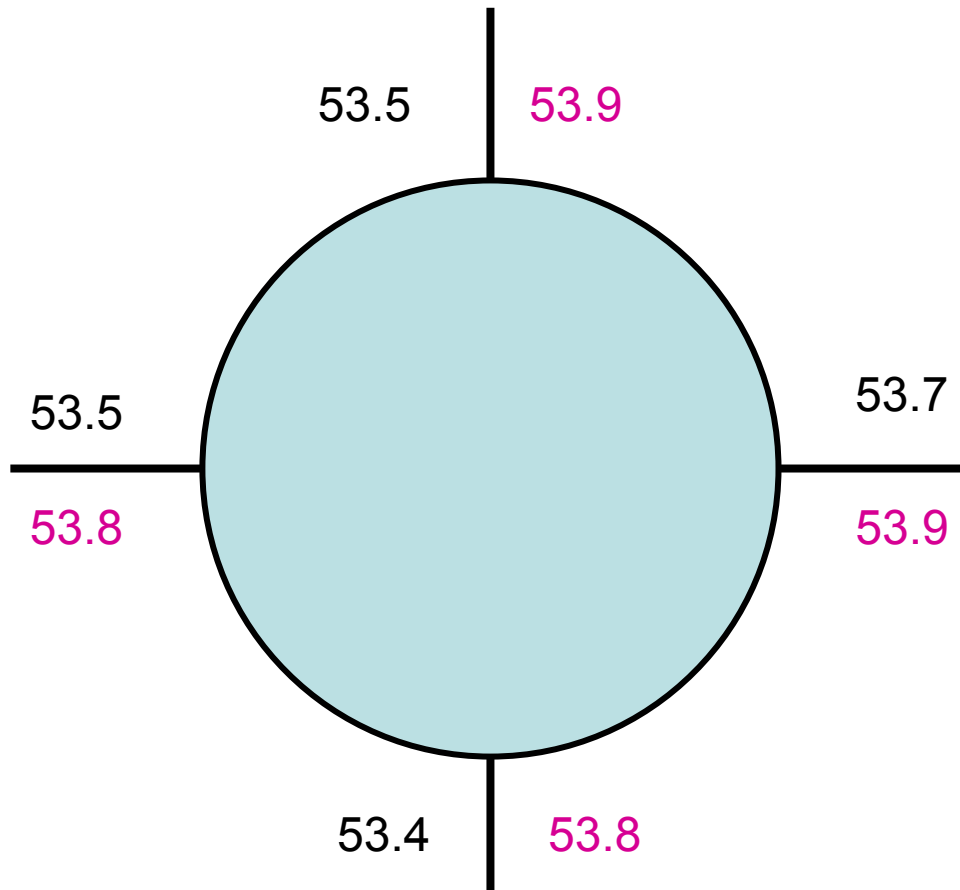
# Depth Measurements After Rewelding



- Pre-compression
- Post-compression with 14 nt-m torque

**$\Delta Z \sim 1.4\text{mm}$**

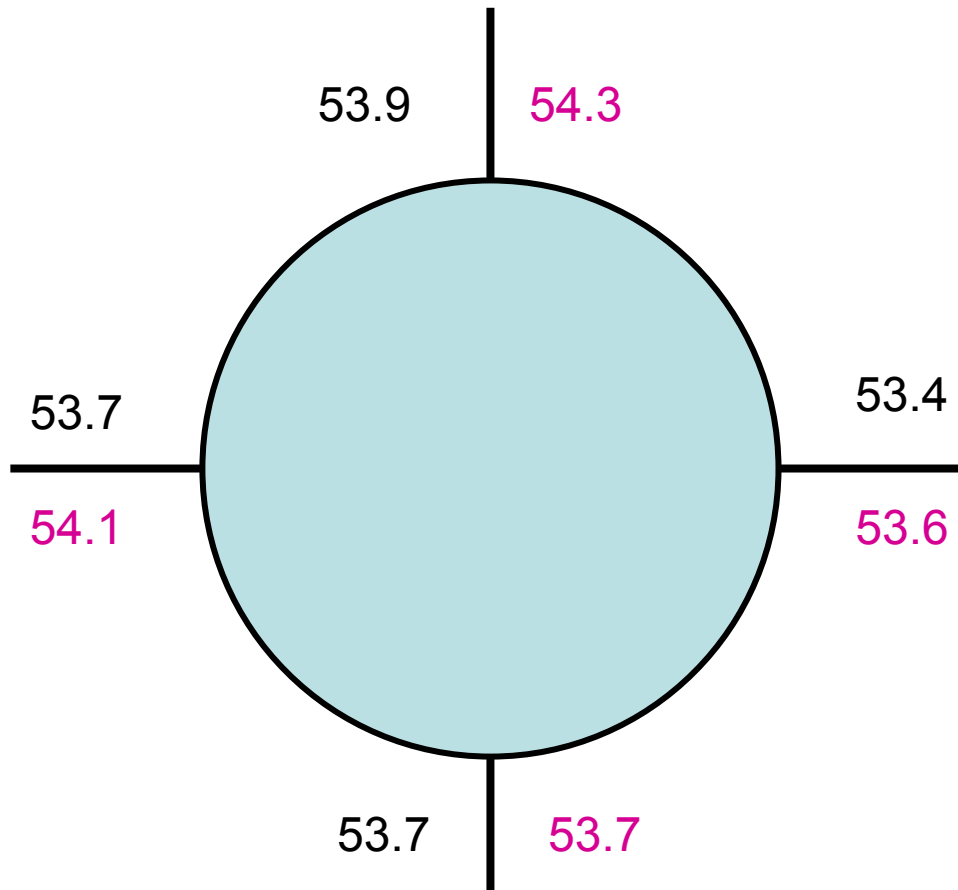
# Depth Measurements - I



- Pre-compression
- Post-compression with 14 nt-m torque

**$\Delta Z \sim 0.3\text{mm}$**

# Depth Measurements -II



- Pre-compression
- Post-compression with 14 nt-m torque

$\Delta Z \sim 0.3\text{mm}$

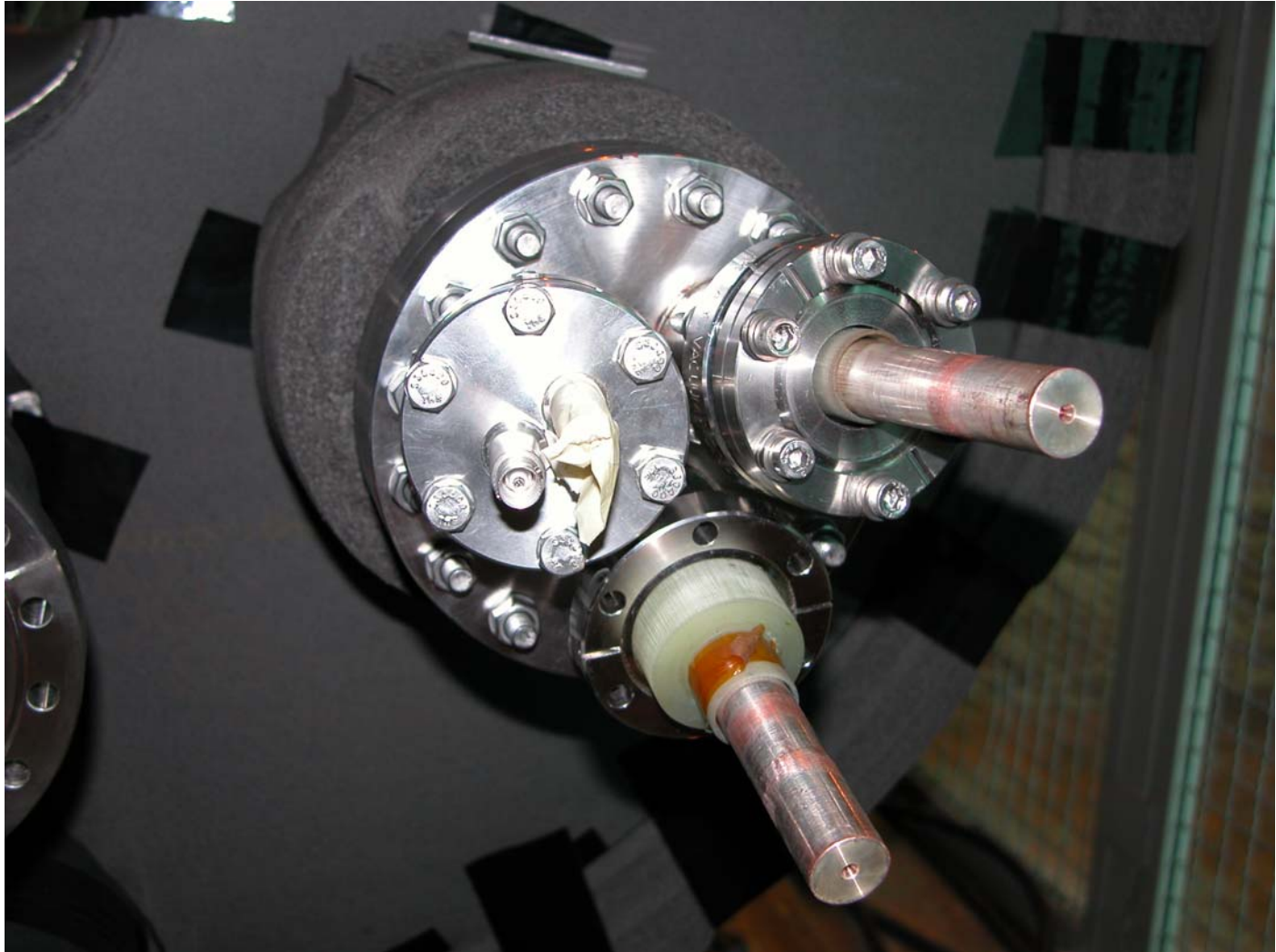


# The Reassembly Work



May 29, 2007

# The Middle Coil



May 29, 2007

# The Solenoid Service End



May 30, 2007

# Hi Pot Test

- Middle Coil to Ground: 800 V <0.001 $\mu$ A
- Inner Coil to Ground : 800V 0.003 $\mu$ A
- Outer Coil (unpacked) to Ground:  
800V 0.01 $\mu$ A
- Inner Coil to Middle Coil: 800V 0.004 $\mu$ A
- Outer Coil to Inner Coil: 800V 0.005 $\mu$ A

May 30, 2007