

# The change of location of the flexible cable tray

Mengyun Guan

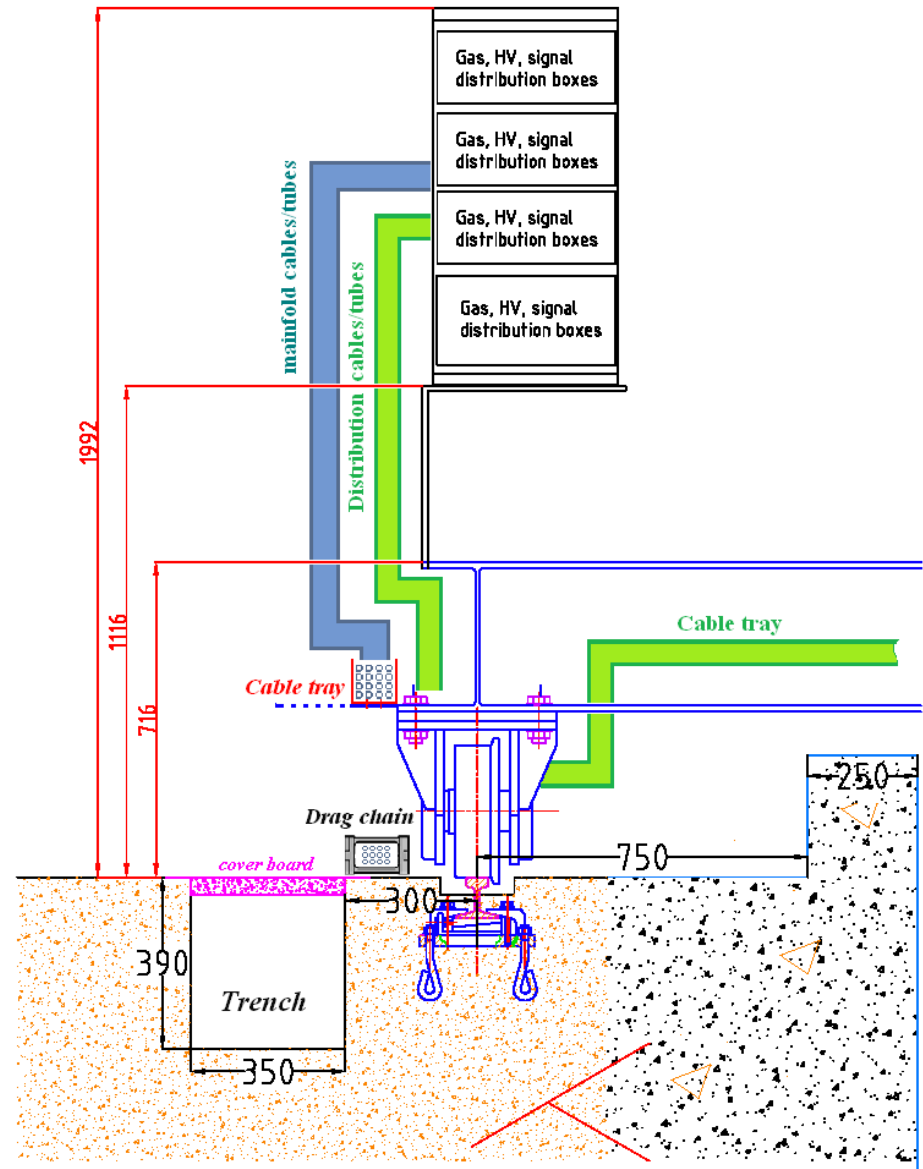
2010.4.14

- This is one of the Open Issues and Assignments (DocDB4723) of the Muon Installation Workshop held on March 23, 2010
- This issue may effect the installation of other systems,
- We report the change to get approval.

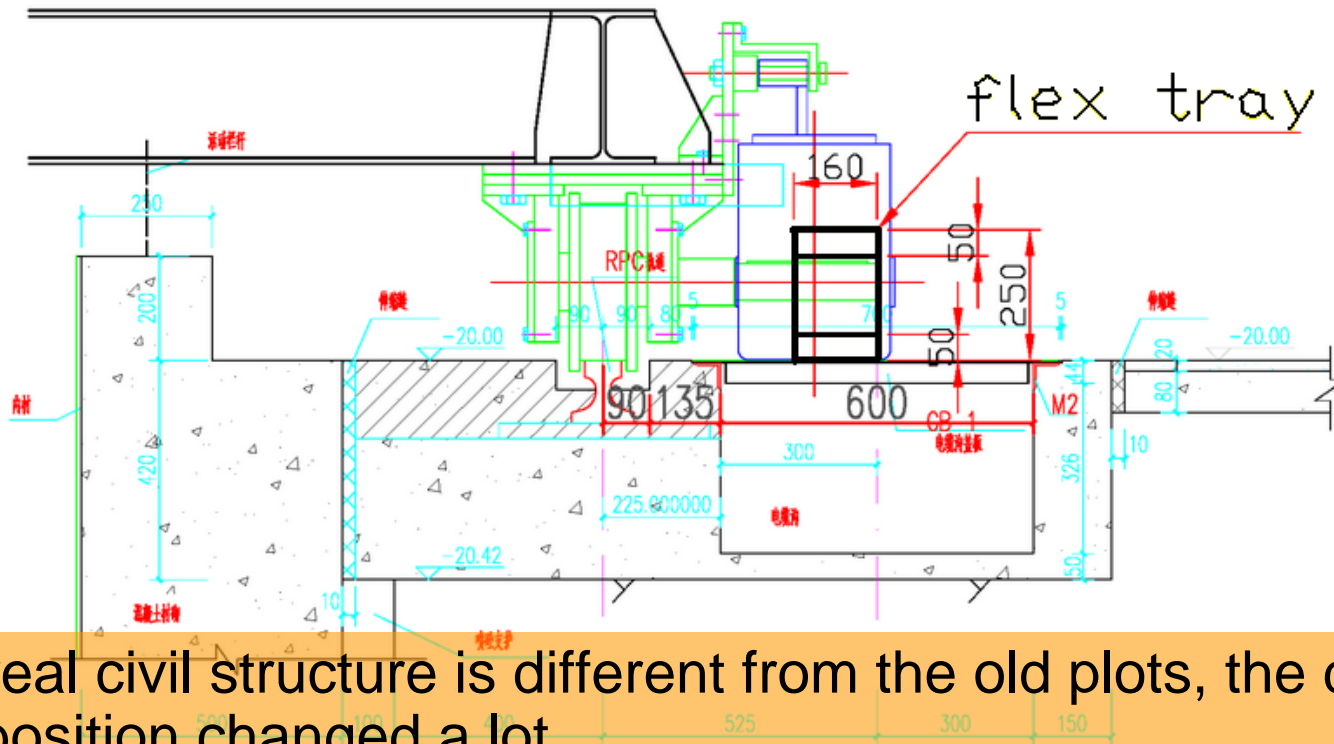
# Old configuration of the flexible cable tray

## 2009.3

- According to the old civil construction plot, there is *300mm-wide* space near the railway,
- According to the old configuration, the flexible cable tray is put on the ground between the railway and the cable trench.



## New configuration of the flexible cable tray



- The real civil structure is different from the old plots, the distance and position changed a lot,
- From above figure, the width of the original place changes to 135mm, which comes to be no place for the flexible cable tray,
- The width of cable trench is 600mm, too wide to avoid,
- Our conclusion is that the flexible cable tray will be put on the trench cover.