

HFS (mesh readout 8x8 mm RMD AD) response uniformity measured w 150 GeV muon beam

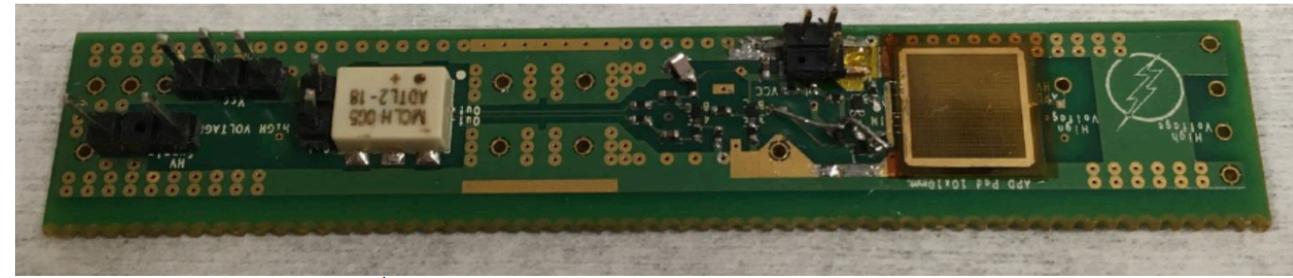
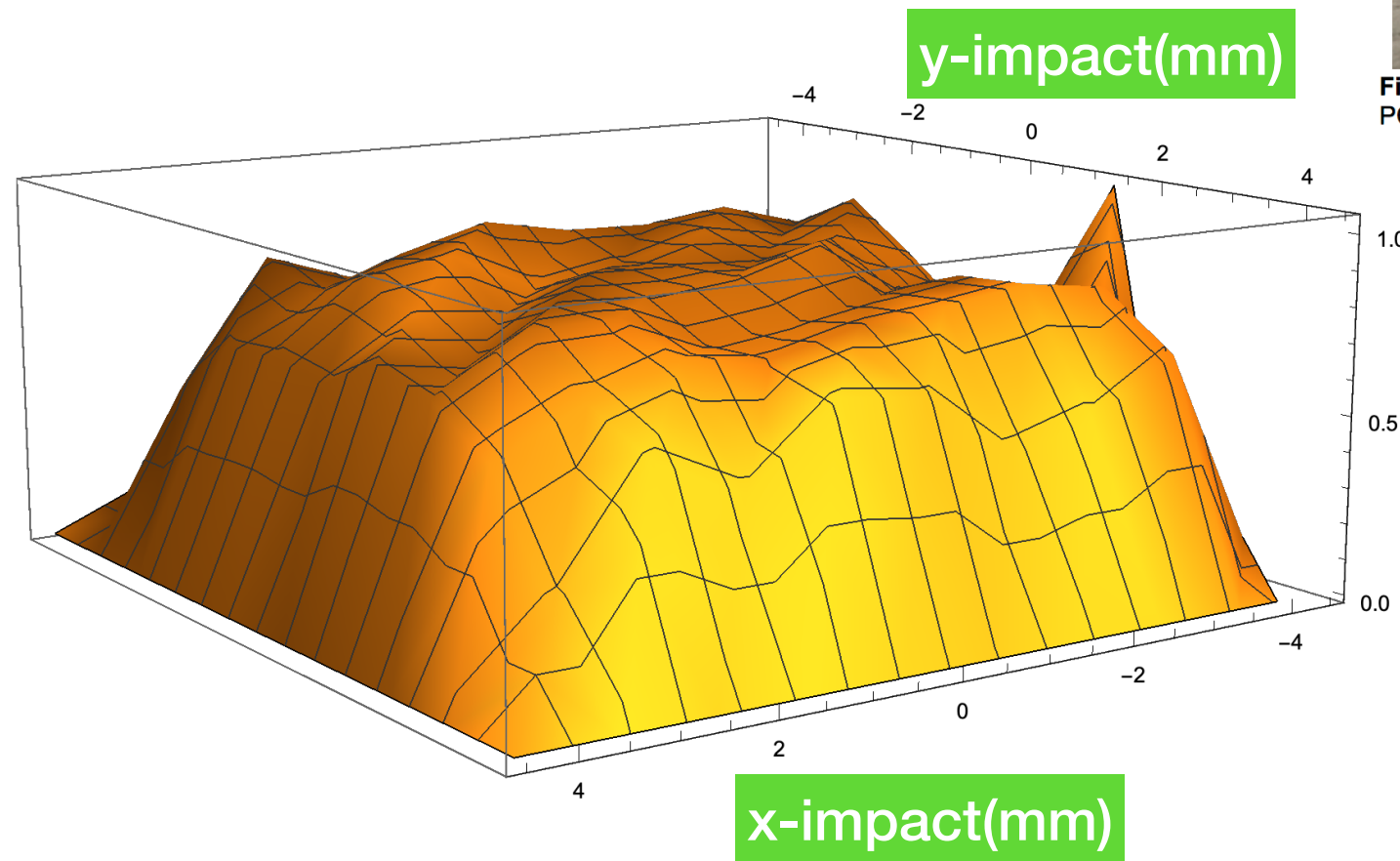


Figure 10. A photograph of a 1st generation PCB with a mounted mesh APD seen on the right-hand side of the PCB.



<Ph>

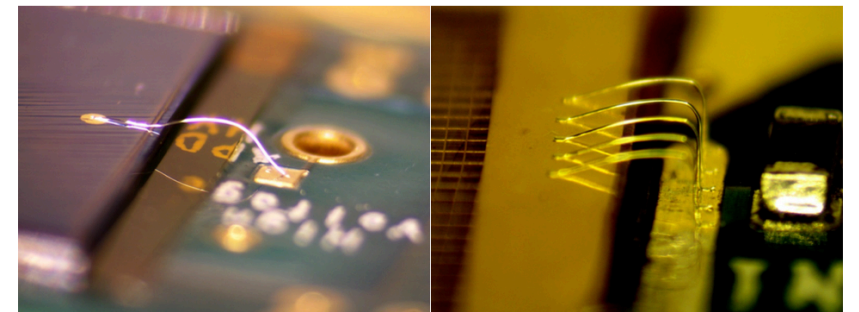
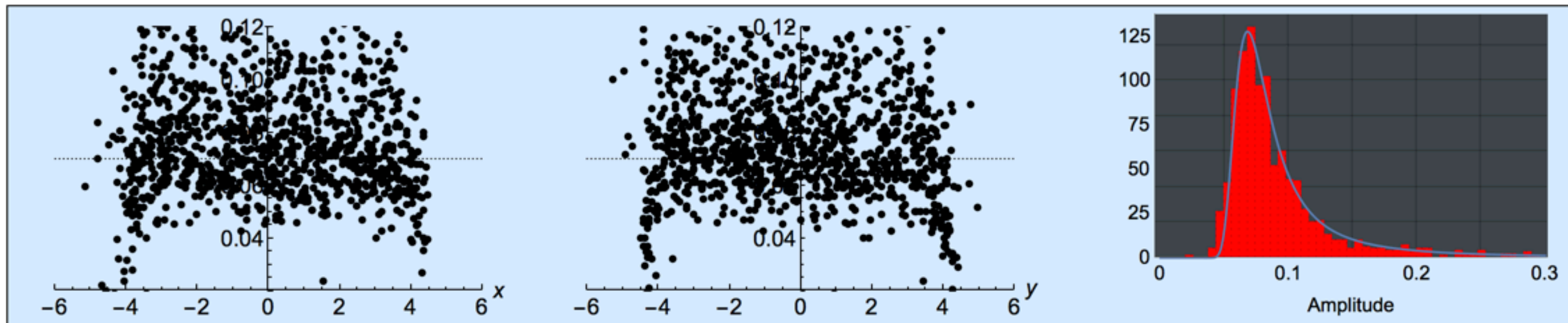
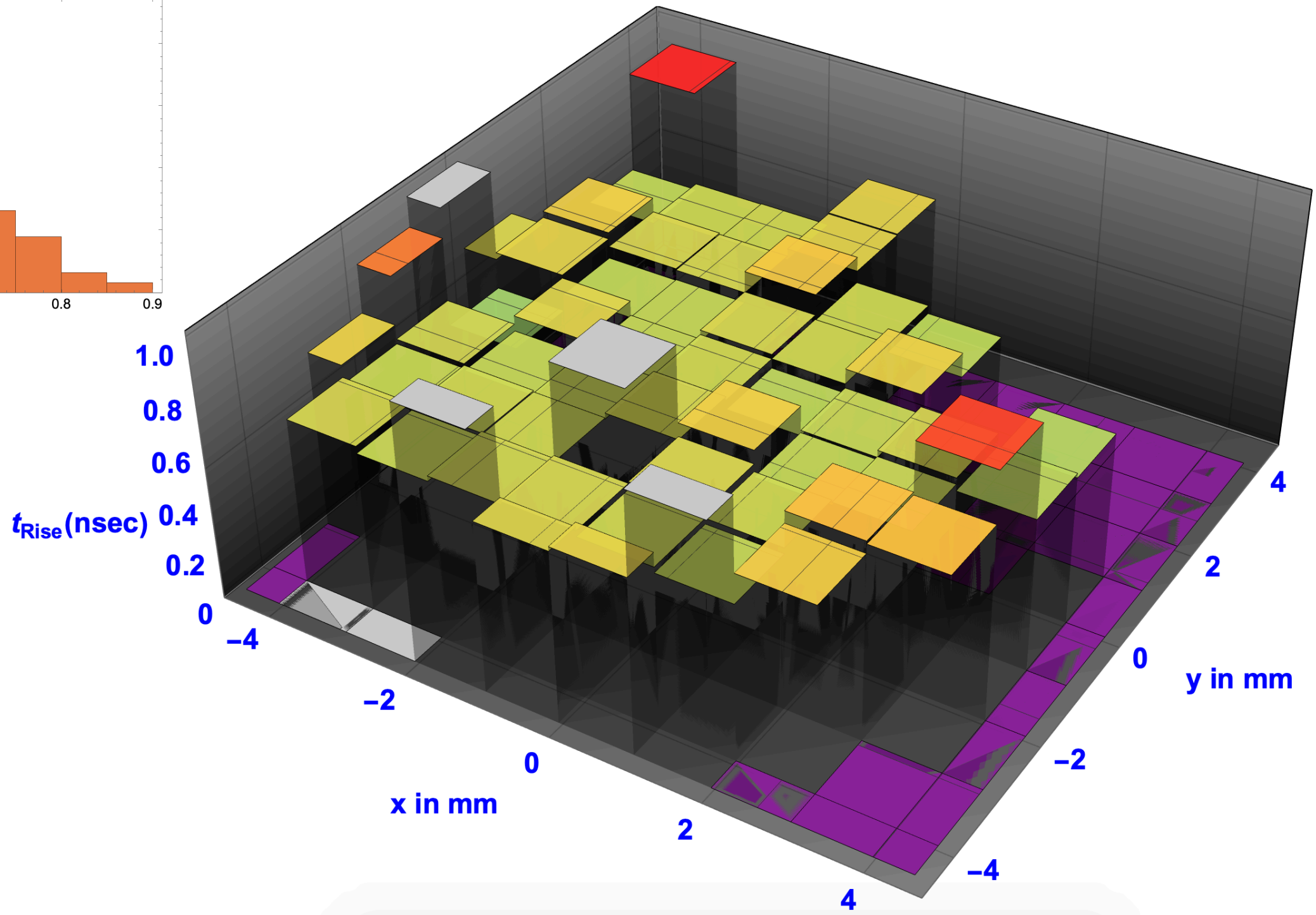
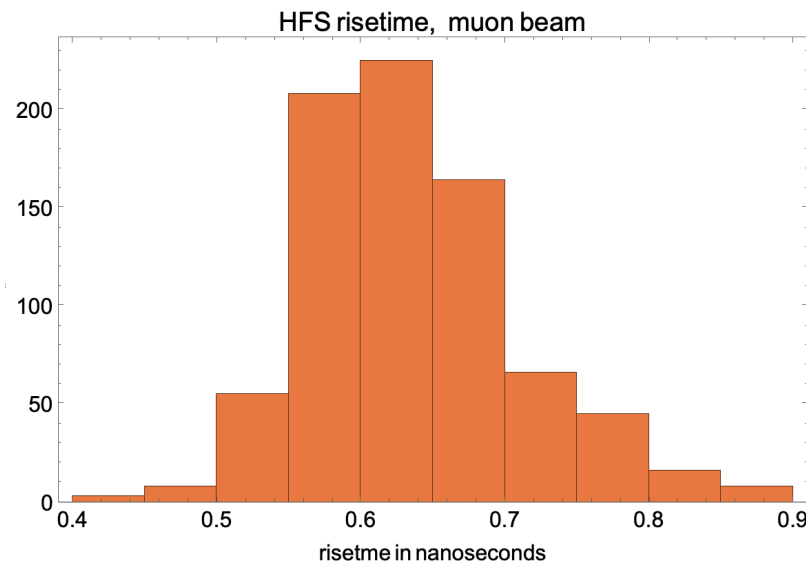


Figure 11. (Left) A close up photograph showing the wire bonded APD anode. (Right) A close up photograph showing the wire bonded Ni mesh screen.

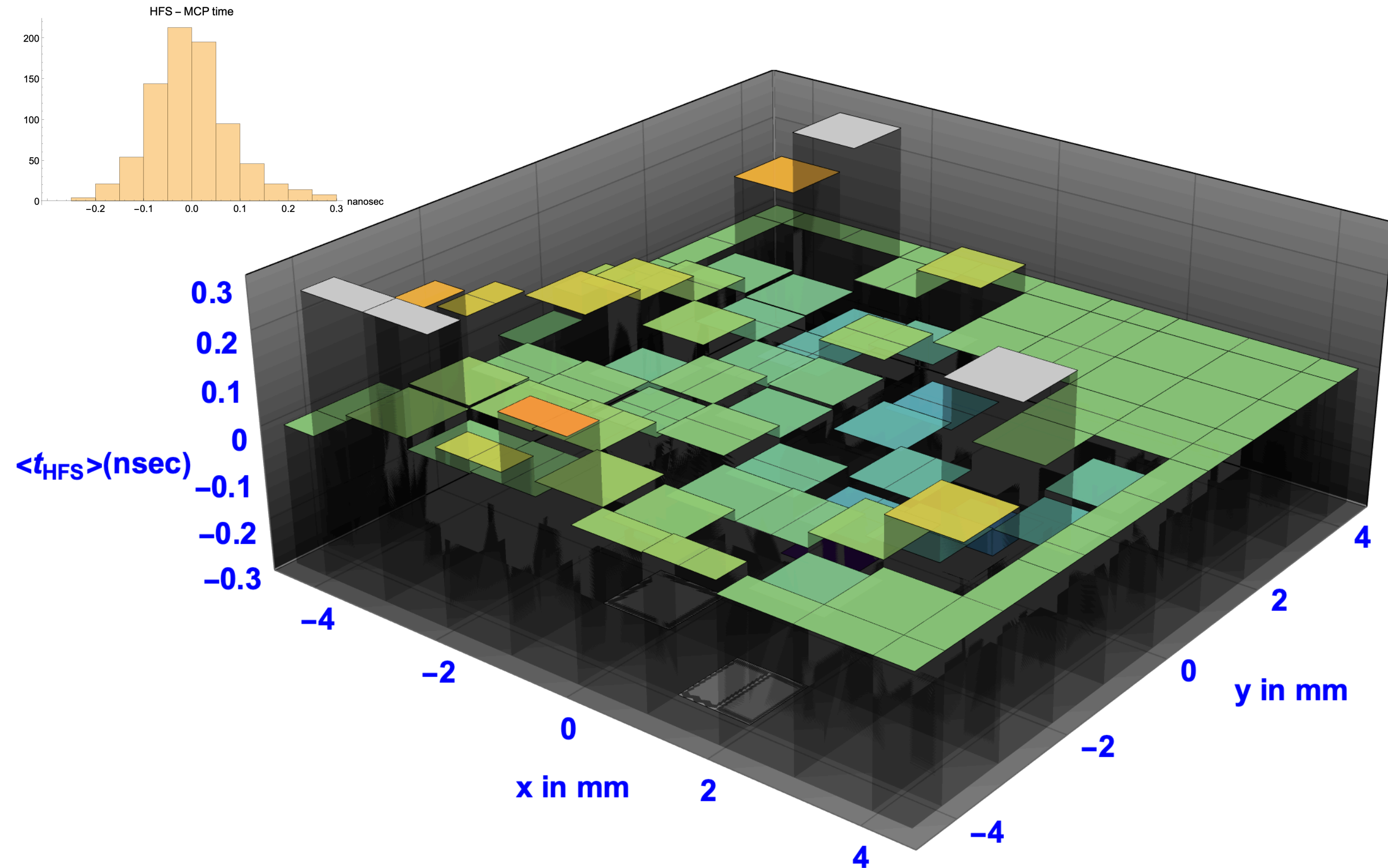
HFS Penn2 Peak vs. x ----- and Peak vs. y and ----- Full Landau Distribution



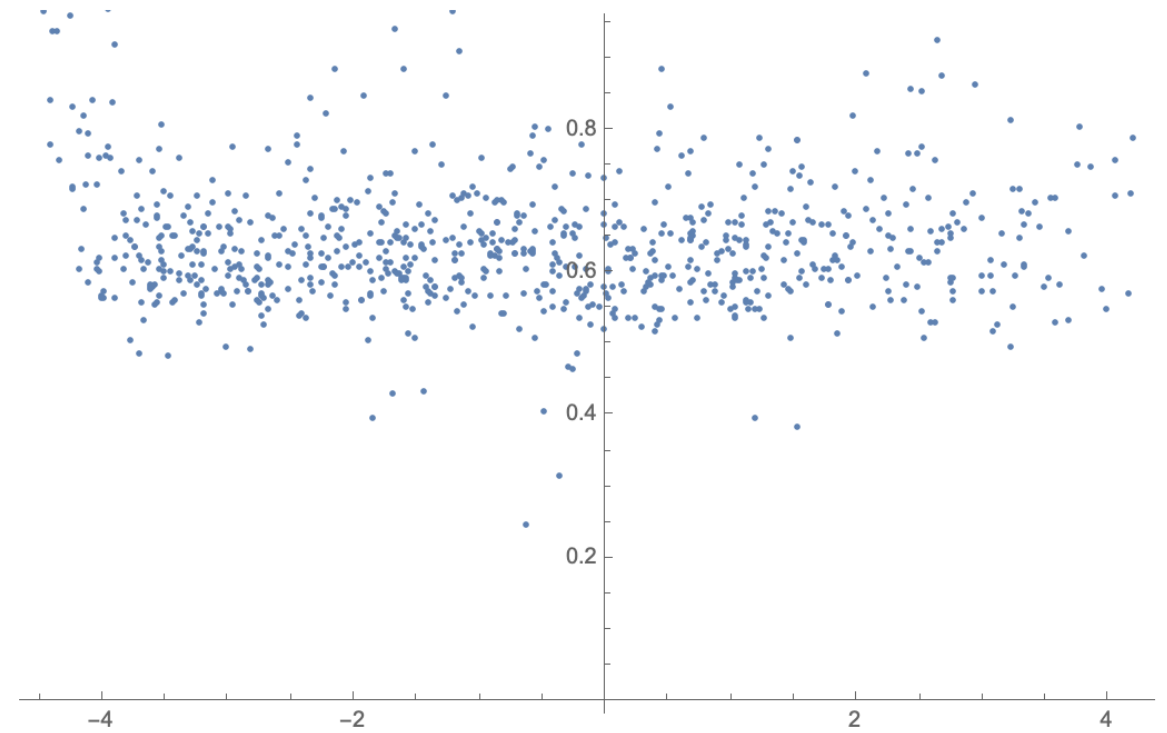
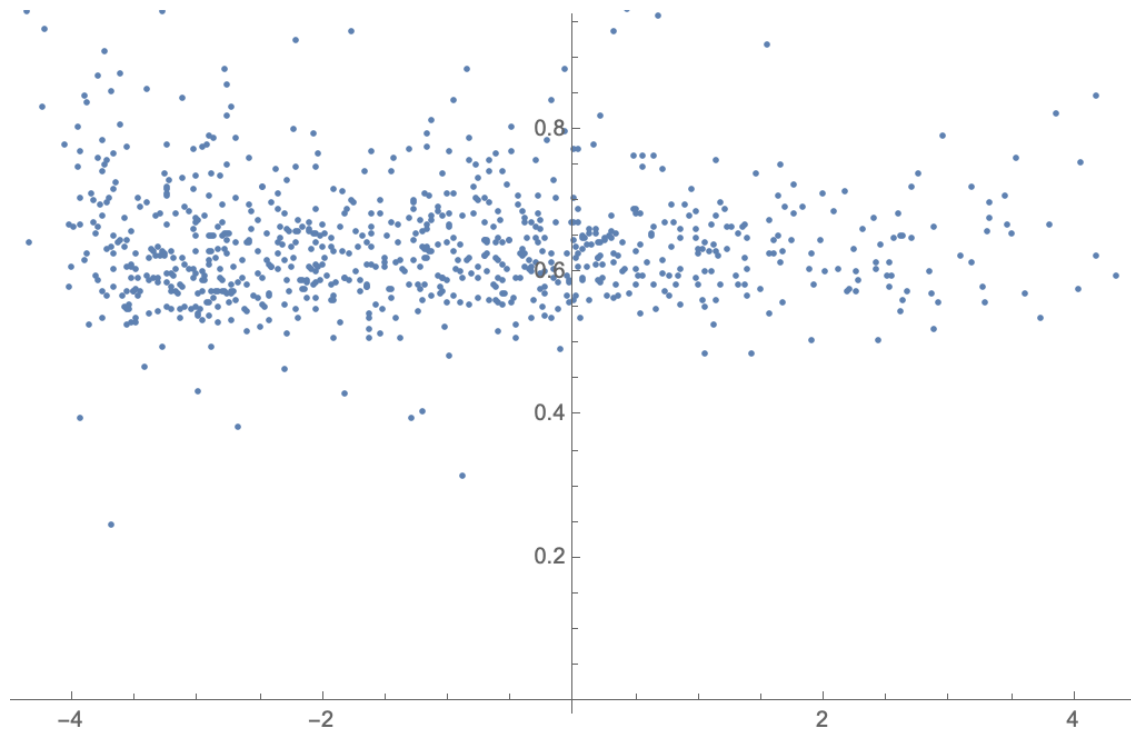
HFS Risetime from 150 GeV muons vs. Impact Position



HFS time of arrival vs impact pos'n (relative to MCP start counter in muon beam)



HFS risetime vs x left and y right



HFS – MCP 150 GeV muon events vs x – left and y – right

